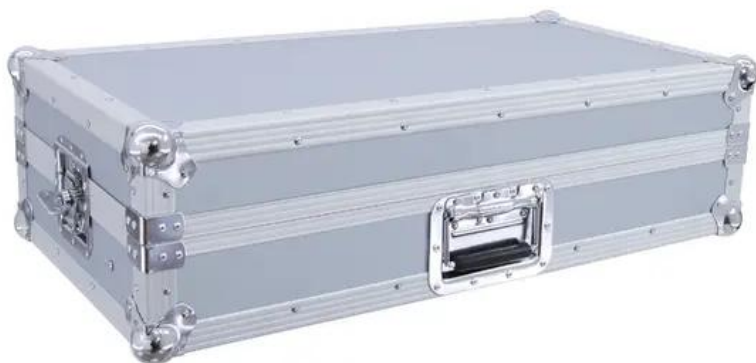


## ROADINGER Mixer case Pro MCB-27, sloping, alu 7U

PRO flightcase for 686 mm devices (27")

Art.n.: 30111557

GTIN: 4026397307467



### Features :

- Suitable for 686 mm units (27"), e.g. controllers and mixers, with 7 U
- Upward tilted profile rails for top-operated units
- Interior upholstered with foam (black)
- High-quality workmanship with plywood multilayered glued, aluminum-colored laminated
- Aluminum profile frames (25 mm) with rounded edges
- Removable cover
- Three-leg, medium-sized steel ball corners
- 2 high-quality lockable butterfly locks
- 4 steel-enforced rubber feet
- Padded carrying handle
- Screws, rack nuts and washers included (18 pieces each)
- Con binari per rack adatti a 27" dispositivi
- Per maggiori informazioni su questo prodotto, consultare "Download" nella scheda tecnica

### Logistica

EAN / GTIN: 4026397307467

Peso : 9,60 kg

Lunghezza : 0.80 m

Larghezza : 0.25 m

Altezza : 0.42 m

### Dati tecnici :

Carico massimo:	15 kg
Spessore del materiale:	7 mm
Larghezza pannello frontale:	27"
Altezza di montaggio:	Approx. 31 cm (7 U)
Profondità di installazione:	315 mm
Peso:	8,70 kg

Strength:	7 mm
Outside dimensions (W x D x H):	780 x 390 x 245 mm
Inside dimensions:	
Mounting width:	720 mm, 27"
Mounting height:	315 mm
Mounting depth:	190 mm
Outer dimensions/corners:	55 mm

**Contenuto della confezione:**

---